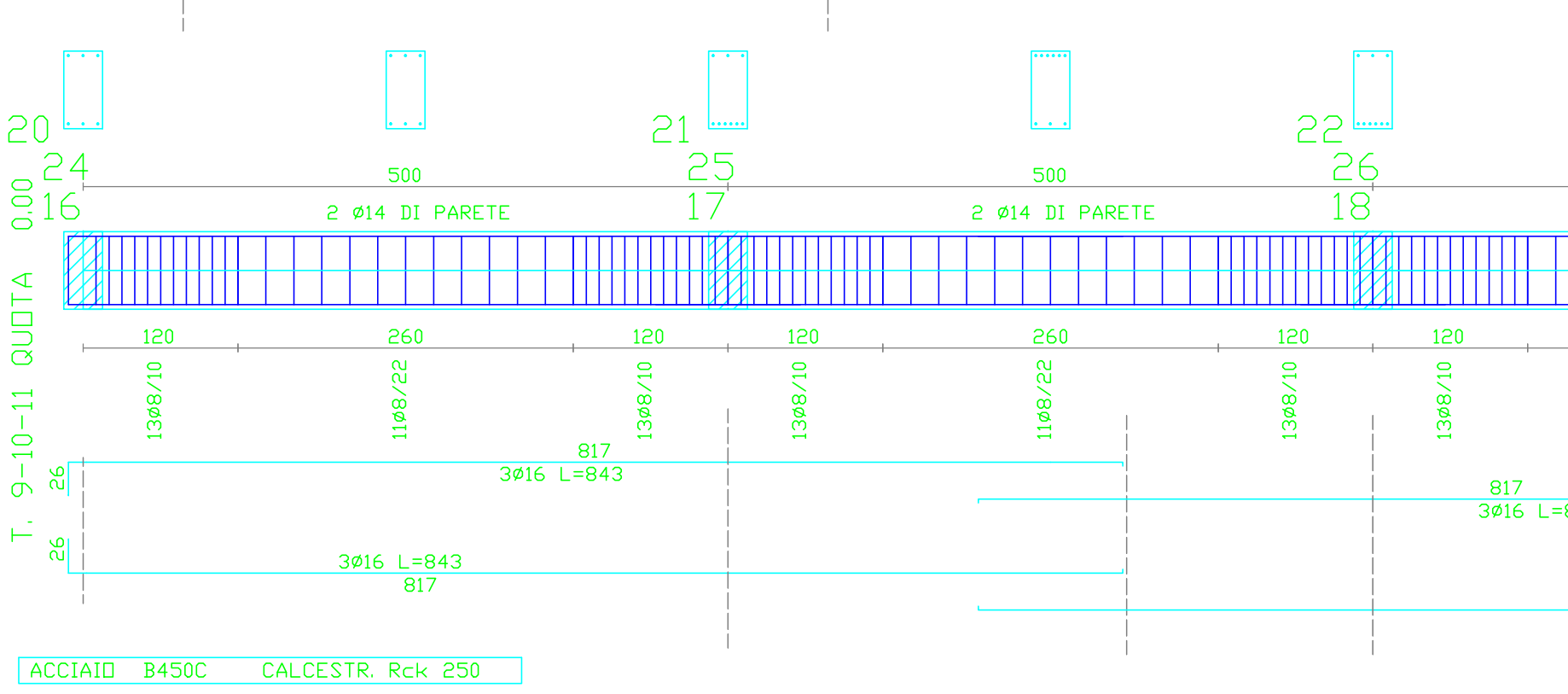
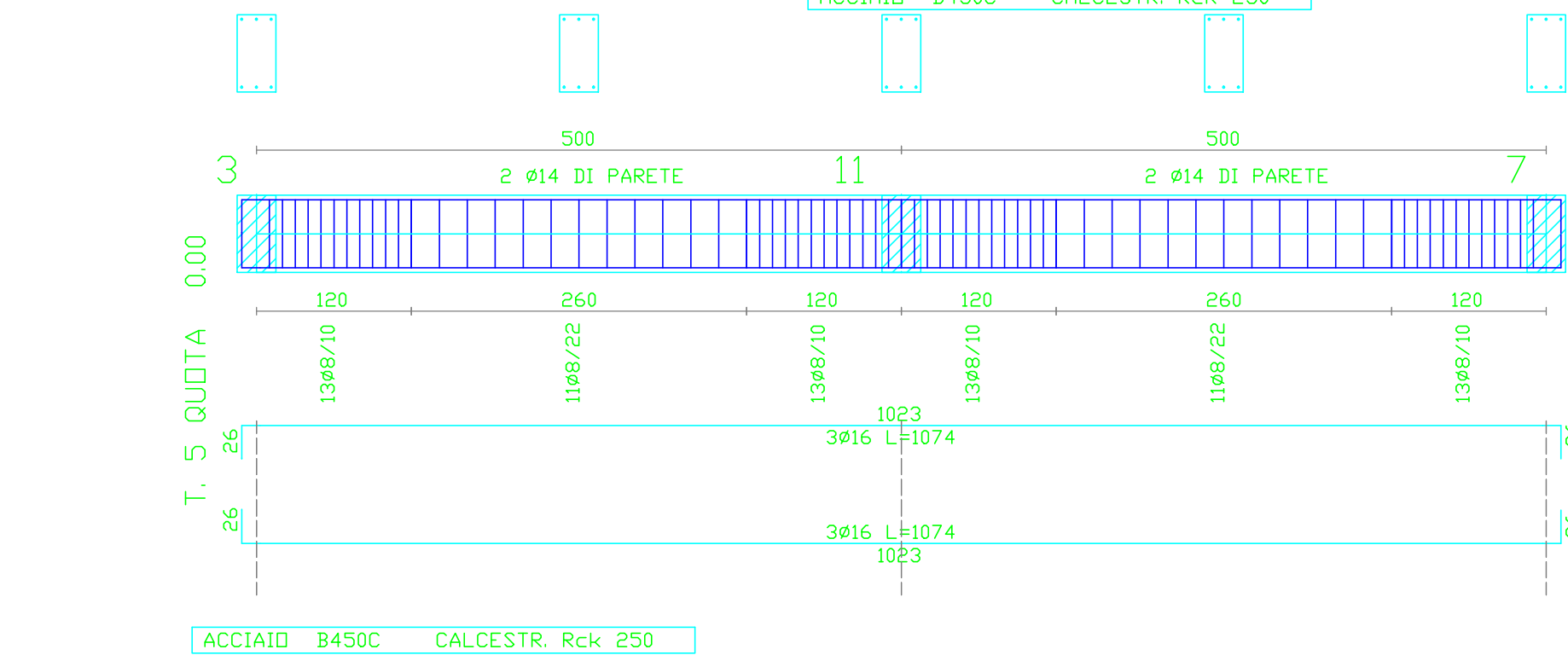


1-9
9-5
LTOT= 172

2-10
10-6
LTOT= 172

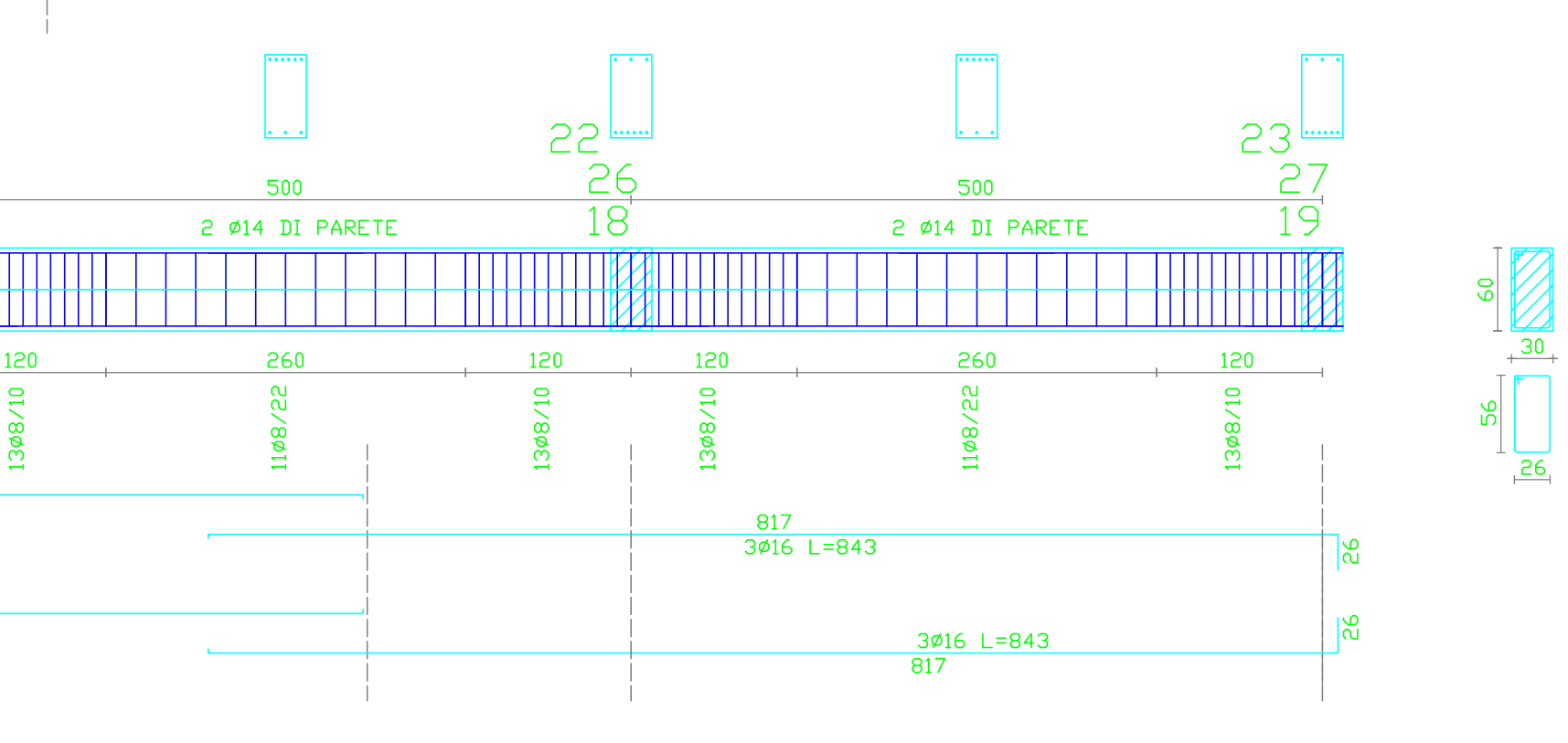
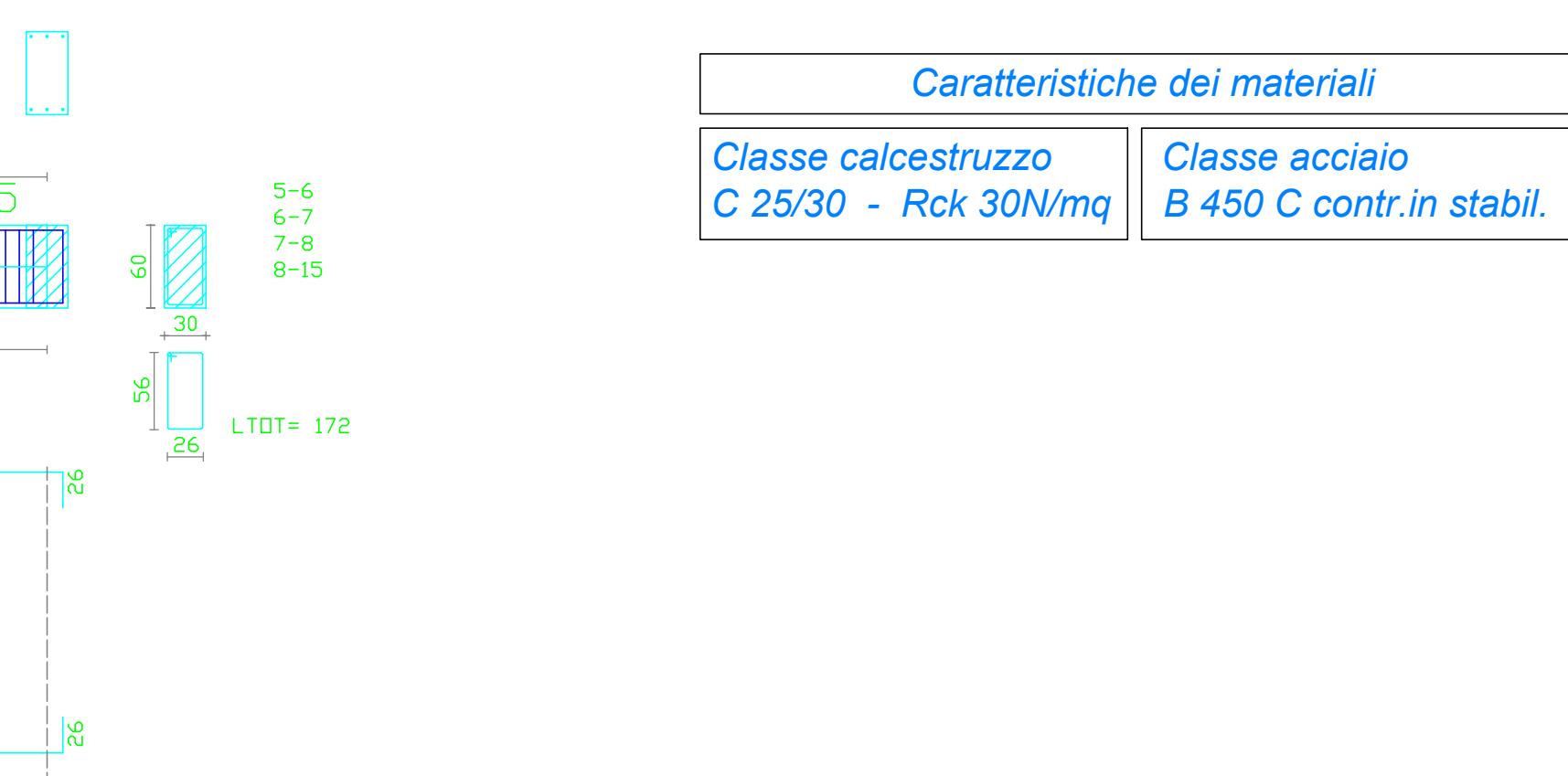
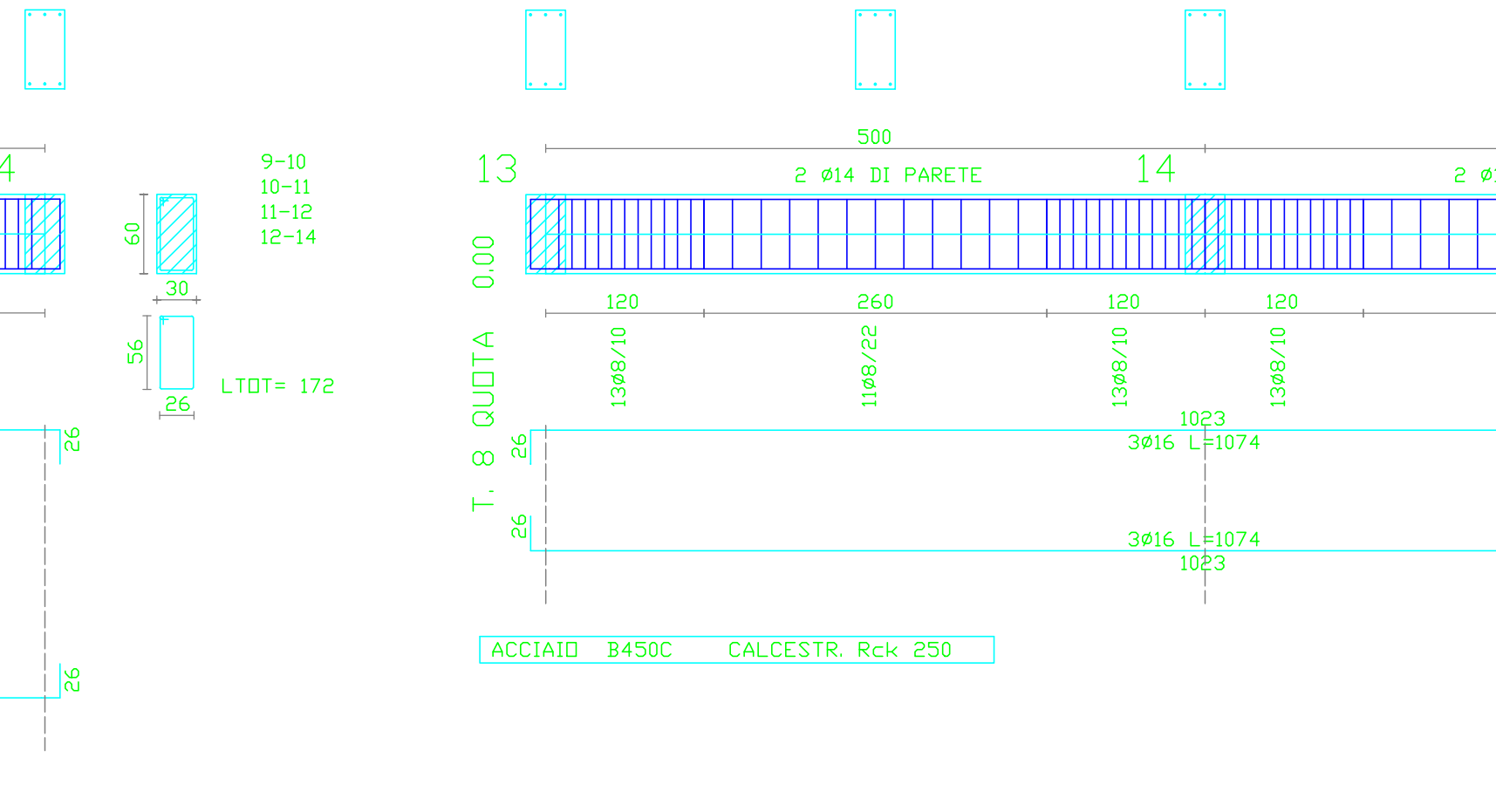
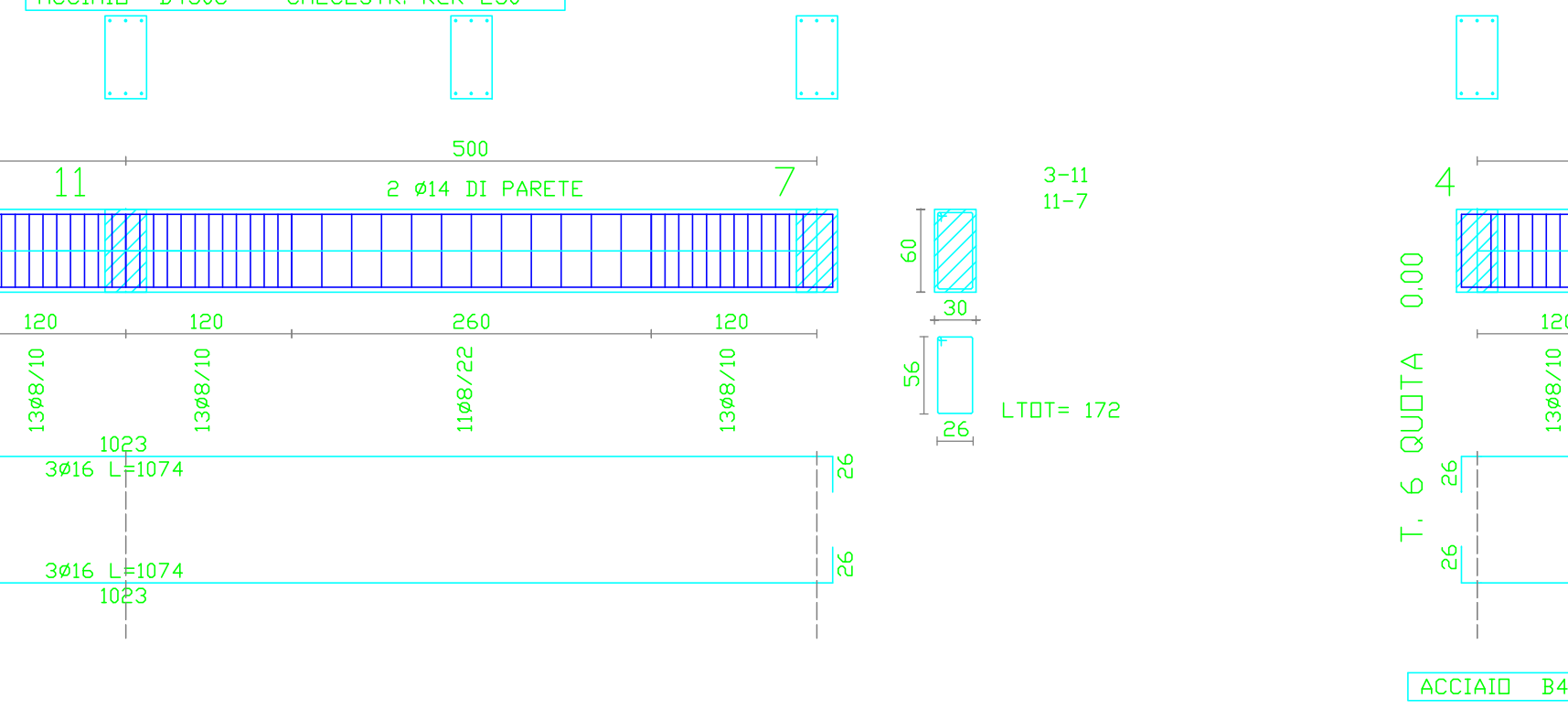
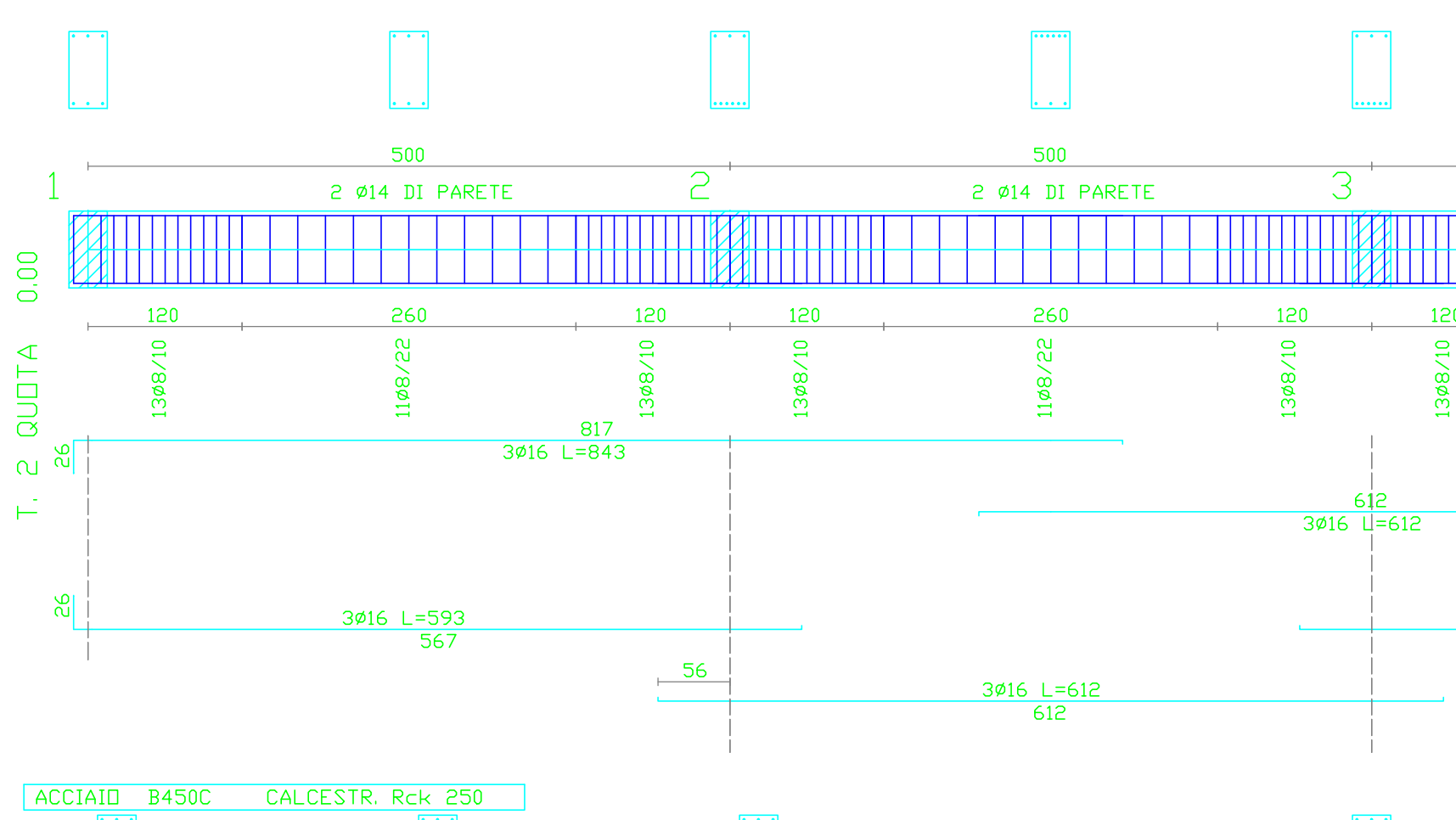
4-12
12-8
LTOT= 172



1-9
9-5
LTOT= 172

2-10
10-6
LTOT= 172

4-12
12-8
LTOT= 172



1-9
9-5
LTOT= 172

2-10
10-6
LTOT= 172

4-12
12-8
LTOT= 172

1-2
2-3
3-4
4-13
LTOT= 172

4-12
12-8
LTOT= 172

1-2
2-3
3-4
4-13
LTOT= 172

Caratteristiche dei materiali	
Classe calcestruzzo C 25/30 - Rck 30N/mq	Classe acciaio B 450 C contr.in stabil.

STUDIO ASSOCIATO CRISAFULLI	
dott. ing. Massimo Crisafulli geom. Attilio Crisafulli dott ing. Alberto Crisafulli	CATANIA - via Centuripe 2/A tel. 095/431232 - 502949 fax. 095/7280684 e-mail: studiocrisafulli@tin.it
COMUNE DI CATANIA	
PROGETTO ESECUTIVO	
PROGETTO DI COMPLETAMENTO DEI LAVORI DEL PRIMO STRALCIO DEL CENTRO DIREZIONALE A.M.T. IN PANTANO D'ARCI	tavola: 11
Tettoia rottamazione motori e cambi Carpenteria cordoli di fondazione	scala: 1:50
committente	progettista e direttore dei lavori dott. ing. Massimo Crisafulli

Visti
